



“The work of today is the history of tomorrow, and we are its makers.”

- Juliette Gordon Low, founder of Girl Scouts of the USA

At Girl Scouts of Greater Mississippi, we firmly believe that a program designed with girls in mind is critical to developing girls of courage, confidence and character who make the world a better place. We believe this because research shows that girls learn best in an all-girl, girl-led and girl-friendly environment, such as a Girl Scout troop. Girl Scouts creates a safe space where girls can try new things, develop new skills and become a leader just by being themselves.

This report provides a glance at 2018 and some of the outcomes Girl Scouts of Greater Mississippi has seen. These outcomes show achievement, training, adventure, community service and development of our program participants, whether they are in a school setting, in a traditional troop, or participating in special events. There are numerous ways for girls to be involved in Girl Scouting.

Through the dedication of our volunteers, staff and supporters, a leadership development program of the highest caliber is offered right here in Mississippi. Our donation base is comprised of the generous gifts from corporations, foundations, grants and individual donors. Our council board and staff contribute each year to the program - they see firsthand how Girl Scouting builds future leaders. We invite you to continue with Girl Scouts of Greater Mississippi as we expand our program offerings to more girls in our state with your support.

Becky Traweek
Chief Executive Officer

Gloria Johnson
Board of Directors, Chair



WOMEN OF DISTINCTION 2018:

Becky Traweek (CEO), Ruth Kellum Fredericks, M.D., Patricia Bennett, J.D., Monica Sethi Harrigill, Juanita Sims Doty, Ed.D., Lauren King McGraw, Gloria Johnson (Board of Directors, Chair)



2476

LEGACY BADGES

BUILDING ON OVER 100 YEARS
OF GIRL SCOUT HISTORY AND
GIVING GIRLS A SENSE OF
HISTORY INSPIRING THEM TO
BE THE BEST THEY CAN BE



4167

LIFE SKILL BADGES

HELPING GIRLS GAIN THE
SKILLS TO ACCEPT
CHALLENGES, OVERCOME
OBSTACLES AND
TAKE THE LEAD.



1557

OUTDOOR BADGES EARNED

DEVELOPING A LIFELONG
APPRECIATION FOR NATURE
AND THE OUT-OF-DOORS



1534

**BADGES IN SCIENCE,
TECHNOLOGY AND
ENGINEERING**

HELPING GIRLS SEE HOW
THEY CAN ACTUALLY
IMPROVE THE WORLD



2213

ENTREPRENEURSHIP BADGES

ALLOWING GIRLS TO MASTER
TOPICS LIKE BUDGETING AND
MONEY MANAGEMENT



3154

**COUNCIL PROGRAM
EXPERIENCES**

BUILDING COURAGE,
CONFIDENCE AND
CHARACTER



1085

LEADERSHIP JOURNEYS

INSPIRING GIRLS TO
DISCOVER MORE OF WHAT
THEY REALLY CARE ABOUT



9

COUNSELORS IN TRAINING

SERVING AS A ROLE MODEL
AND MENTOR FOR YOUNGER
GIRL SCOUTS AT CAMP



67

**PRESIDENT'S VOLUNTEER
SERVICE AWARDS**

TAKING SERVICE BEYOND THE
GIRL SCOUT PROGRAM

IMPACT AT

HIGHEST AWARDS



41

BRONZE AWARDS

At The Bronze Award Level,
Girls Must Work In A Team Setting.



31

SILVER AWARDS

When Girls Work On Their Silver Award,
They Have The Option To Work Individually
Or In A Group Setting.



15

GOLD AWARDS

The Gold Award Represents The Highest
Achievement In Girl Scouts, Which Girls
Must Earn As Individuals.

-SCIENCE-TECH



DAISIES 27%

BROWNIES 32%

JUNIORS 24%

CADETTES 12%

SENIORS 3%

AMBASSADORS 2%

51.8%

GIRL RETENTION
FROM FY 2017

688

GIRL SCOUT TROOPS
DISCOVERING THEIR TALENTS
AND PASSIONS IN A SAFE AND
SUPPORTIVE ALL-GIRL SETTING

8455

REGISTERED GIRL MEMBERS
LEADING THEIR OWN
ADVENTURE AND TEAMING
UP WITH OTHER GIRLS IN
AN ALL-GIRL ENVIRONMENT
TO CHOOSE THE EXCITING,
HANDS-ON ACTIVITIES THAT
INTEREST THEM MOST.

A GLANCE

2284

DEDICATED VOLUNTEERS
GUIDING GIRLS THROUGH THE
GIRL SCOUT LEADERSHIP EXPERIENCE

31

VOLUNTEERS RECOGNIZED
WITH NATIONAL AWARDS

405

LIFETIME MEMBERS
STAYING CONNECTED TO
THE LARGEST LEADERSHIP
DEVELOPMENT ORGANIZATION
FOR GIRLS IN THE WORLD

1804

ADULTS
SUCCESSFULLY COMPLETED
NEW LEADER TRAINING

21

COMMUNITY PARTNERS
PROVIDING ADDITIONAL PROGRAM
EXPERIENCES FOR 697 GIRLS

14

MEDICAL PROFESSIONALS
VOLUNTARILY SUPPORTED THE
HEALTH AND SAFETY OF GIRLS AND
STAFF AT SUMMER CAMP

- ENGINEERING - ART - MATH

5

WAYS GIRL SCOUTS HELP GIRLS THRIVE

STRONG SENSE OF SELF

GIRLS HAVE CONFIDENCE IN THEMSELVES AND THEIR ABILITIES, AND FORM POSITIVE IDENTITIES

POSITIVE VALUES

GIRLS ACT ETHICALLY, HONESTLY, AND RESPONSIBLY, AND SHOW CONCERN FOR OTHERS

CHALLENGE SEEKING

GIRLS TAKE APPROPRIATE RISKS, TRY THINGS EVEN IF THEY MIGHT FAIL, AND LEARN FROM MISTAKES

HEALTHY RELATIONSHIPS

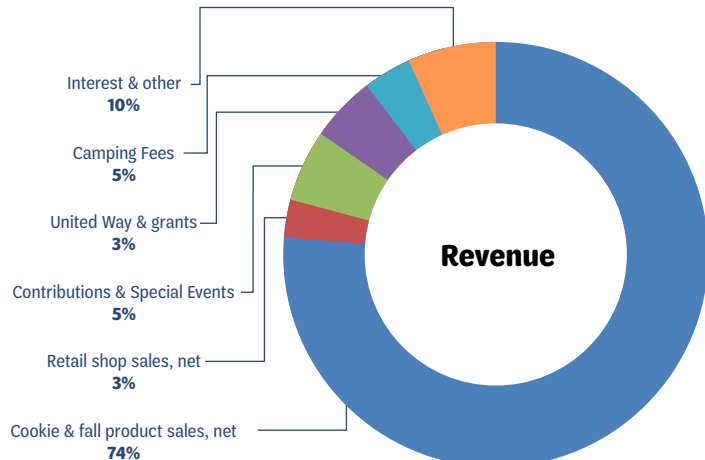
GIRLS DEVELOP AND MAINTAIN HEALTHY RELATIONSHIPS BY COMMUNICATING THEIR FEELINGS DIRECTLY AND RESOLVING CONFLICTS CONSTRUCTIVELY

COMMUNITY PROBLEM SOLVING

GIRLS DESIRE TO CONTRIBUTE TO THE WORLD IN PURPOSEFUL AND MEANINGFUL WAYS, LEARN HOW TO IDENTIFY PROBLEMS IN THE COMMUNITY, AND CREATE "ACTION PLANS" TO SOLVE THEM



girl scouts

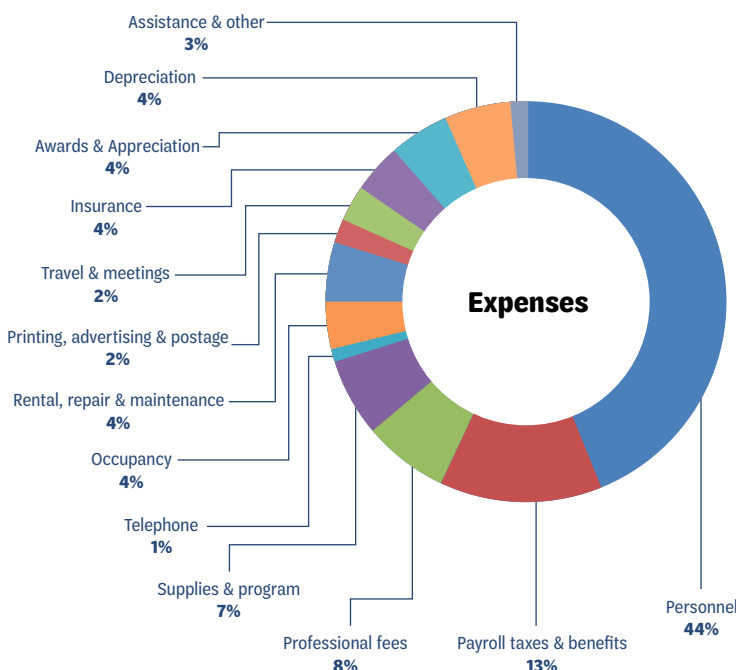
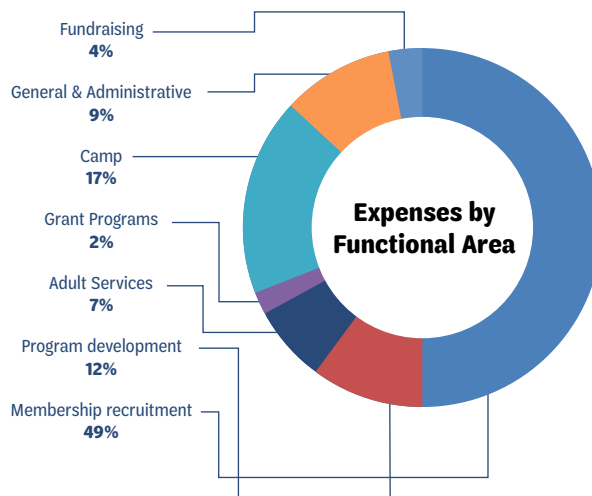


REVENUE

Cookie & fall product sales, net	2,468,257
Retail shop sales, net	94,790
Contributions & special events	164,698
United Way & grants	113,672
Camping fees	150,470
Interest, Gain on Sale & other	349,293
Total Revenue	3,341,180

EXPENSES BY FUNCTIONAL AREA

Membership recruitment	1,585,809
Program development	388,361
Adult services	226,544
Grant programs	64,727
Camp	550,178
General and administrative	291,271
Fundraising	129,453
Total Expenses	3,236,343
Change in Net Assets	104,837



EXPENSES

Personnel	1,419,610
Payroll taxes & benefits	414,513
Professional fees	258,557
Supplies & program	231,714
Telephone	39,353
Occupancy	129,613
Rental, repair & maintenance	123,291
Printing, advertising & postage	45,196
Travel & meetings	61,696
Insurance	133,718
Awards & Appreciation	133,205
Depreciation	137,918
Assistance & other	107,959
Total Expenses	3,236,343

2018 HOW THE COOKIE CRUMBLES!

Troops & SU Proceeds & Rewards	\$ 0.84	21%
Cost of Goods	\$ 1.10	28%
Membership	\$ 1.00	25%
Resident Camp	\$ 0.36	9%
Girl Program	\$ 0.29	6%
Adult Training	\$ 0.14	4%
Fundraising	\$ 0.08	2%
General & Administrative	\$ 0.19	5%
Total	\$ 4.00	100%





The Girl Scout Mission

Girl Scouting builds girls of courage, confidence and character who make the world a better place.

The Girl Scout Promise

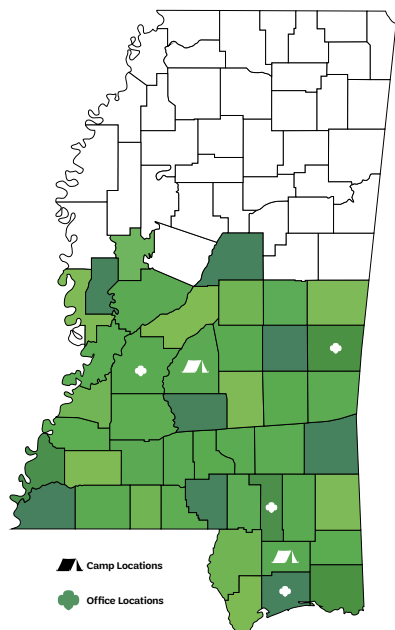
On my honor, I will try
to serve God and my country,
to help people at all times,
and to live by the Girl Scout Law.

The Girl Scout Law

I will do my best to be honest and fair,
Friendly and helpful,
Considerate and caring,
Courageous and strong,
And responsible for what I say and do,
And to respect myself and others,
Respect authority,
Use resources wisely,
Make the world a better place,
And be a sister to every Girl Scout

Girl Scouts of Greater Mississippi

601-326-GIRL (4475) | www.gsgms.org



Headquarters/Service Center

1471 West County Line Road
Jackson, MS 39213

Hattiesburg Service Center

210 West Front Street, Suite 100
Hattiesburg, MS 39401

Gulf Coast Service Center

1610 25th Avenue
Gulfport, MS 39501

Meridian Service Center

307 24th Avenue South
Meridian, MS 39301

Camp Iti Kana

11 Camp Iti Kana Road
Wiggins, MS 39577

Camp Wahi

1593 Shiloh Road
Brandon, MS 39042

45

COUNTIES SERVED

2

CAMP PROPERTIES

4

SERVICE CENTERS

Girl Scouts of Greater Mississippi is a nonprofit 501(c)(3) and relies on the generous support of donors. Together, we can deliver impactful, engaging and empowering programs that encourage girls to reach their greatest leadership potential. Show your strength by donating, volunteering, or supporting today. Visit gsgms.org or call 601.326.4475 to find out how you can support.

2018 BOARD OF DIRECTORS

Gloria Johnson, Chair
Retired, Entergy Mississippi

Michelle Thames, First Vice Chair
MSU Riley Center

Carmen Walters, Second Vice Chair
MS Gulf Coast Community College

Tracy Wofford, Secretary
Cushman & Wakefield

Angela Herzog, Treasurer
Angela T. Herzog, CPA

Carolyn Boteler, Ex-officio
Tempstaff, Inc.

Members at Large:

Janice Brown
Trustmark Bank

Kearn Cherry
PRN Home Care

Connie Moran
City of Ocean Springs

Sarah Palmer
U. S. Army Corps of Engineers

Marlena Pickering
Cigna Corporation

Elee Reeves
Coker & Palmer Investment Securities

Dan Robinson
DR Properties, LLC

Robin Robinson
Retired, Sanderson Farms

Wanda Russell
SuperTalk Mississippi

Steve Seale
SAP

Charlotte Seals
Madison County Schools

Candie Simmons
Regions Financial Corporation

Janice Touchstone
Janice Touchstone, DMD

Dan Thurtell
GRG International Limited

